



202CB 1/8B1/8BVLC

The 202CB is a direct-acting 2-way, normally closed valve for control of air, water, and steam applications.

FEATURES

- Superior life with stainless steel enclosing tube
- Repair kits available
- Brass or stainless steel bodies

SPECIFICATIONS

Watts	12 AC, 15 DC
Va Inrush	28
Va Holding	19
Maximum Working Pressure.....	500 psi (35 bar), 1000 psi (69 bar) 3/64" orifice only
Weight	1 lb
UL/CUL file number	MP604

202CB SERIES INDUSTRIAL SOLENOID VALVES

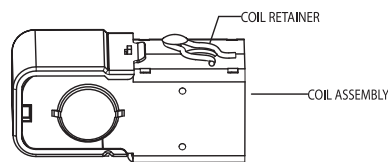
DESCRIPTION	PORT SIZE (IN)	CONN. SIZE	MOPD ² AC	MOPD ² DC	CV	MAX. AC FLUID TEMP. ¹	ELASTOMER	SUGGESTED COIL	MODEL NUMBER	ITEM NUMBER
Brass General Purpose	1/8	1/8"	150	75	0.34	180°F	BUNA-N	AMG	202CB 1/8B1/8BVLC	030113
Brass General Purpose	5/32	1/8"	100	40	0.48	180°F	BUNA-N	AMG	202CB 1/8B5/32BVLC	030114
Brass Steam	1/8	1/8"	150	—	0.34	400°F	Ethylene Propylene	AHG	202CB 1/8B1/8PVLC	030118
Brass Steam	1/8	1/8"	150	—	0.34	400°F	PTFE w/Ethylene Propylene Gaskets	AHG	202CB 1/8B1/8TVLC	030123
Brass Steam	5/32	1/8"	100	—	0.48	400°F	Viton w/ Ethylene Propylene Gaskets	AHG	202CB 1/8B5/32VVLC	056954
Stainless Steel General Purpose	1/16	1/8"	500	500	0.12	180°F	BUNA-N	AMG	202CB 1/8S1/16BVLC	064756

¹ With an ambient temperature of 77°F

² Maximum Operating Pressure Differential

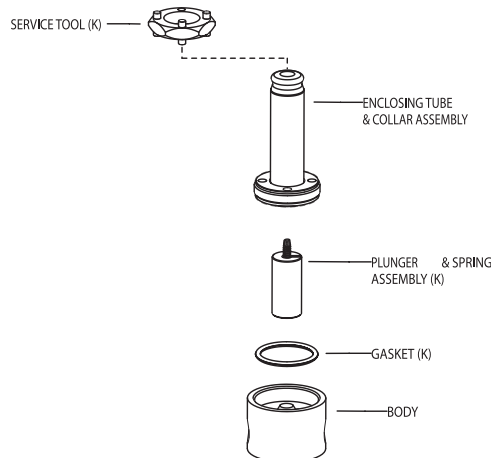
VLC - See coil assemblies for availability

EXPLODED VIEW & PARTS KIT DATA



VALVE REPAIR KIT

(K) indicates part is supplied in valve repair kit.



202CB COMPLETE VALVE REPAIR KITS

SEAT MATERIAL	MODEL NUMBER	ITEM NUMBER
Rulon	K-1068	032396
Ethylene Propylene	K-1064	021104