

## 90-112 THRU 90-130 FAN CONTROL CENTER

Transformer and relay combination for easy installation on a 4" X 4" junction box.

90-113

### FEATURES

- Line voltage connections pre-wired
- Energy limiting Class II transformer design
- Color coded pre-stripped leads
- Low voltage connections on terminal board

### SPECIFICATIONS

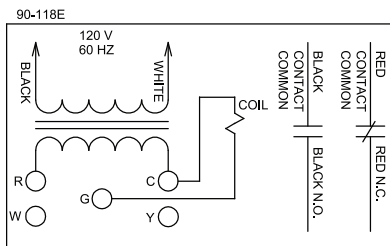
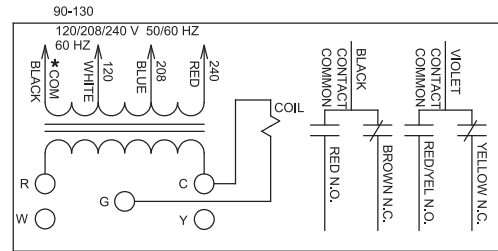
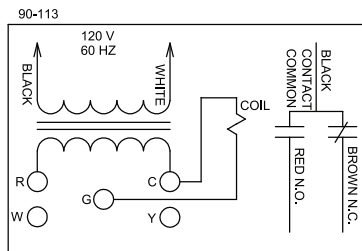
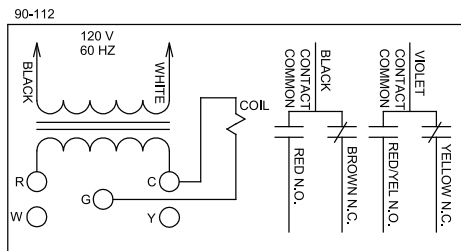
UR/CUR File Number .....E73641

### REPLACEMENT RELAY FOR FAN CONTROL CENTER

| REPLACES RELAY ON                               | DESCRIPTION                  | MODEL NUMBER | ITEM NUMBER |
|---|------------------------------|--------------|-------------|
| 90-112, 90-113, 90-117, 90-118E, 90-119, 90-130 | DPDT Universal Plug-in Relay | 90-340       | 90 340S1    |

### 90-112 THRU 90-130 FAN CONTROL CENTER

| MARS NUMBER | TRANSFORMER |    |                                 |           |    |                                       | RELAY       | CONTACT RATINGS |              |                |              | MODEL NUMBER | ITEM NUMBER |
|-------------|-------------|----|---------------------------------|-----------|----|---------------------------------------|-------------|-----------------|--------------|----------------|--------------|--------------|-------------|
|             | PRIMARY     |    |                                 | SECONDARY |    |                                       |             | 120 VAC (AMPS)  |              | 240 VAC (AMPS) |              |              |             |
|             | VOLTAGE     | HZ | CONNECTIONS                     | VOLTAGE   | VA | CONNECTIONS                           |             | FULL LOAD       | LOCKED ROTOR | FULL LOAD      | LOCKED ROTOR |              |             |
| 24010       | 120         | 60 | Color coded leads, pre-stripped | 24V       | 40 | Terminal board with 5 screw terminals | DPDT        | 13.8            | 82.8         | 6.9            | 41.4         | 90-112       | 90 112S1    |
| 24013       |             |    |                                 |           |    |                                       | SPDT        |                 |              |                |              | 90-113       | 90 113S1    |
| 24012       |             |    |                                 |           |    |                                       | SPNO / SNPC |                 |              |                |              | 90-118E      | 90 118ES1   |
| 24010       |             |    |                                 |           |    |                                       | DPDT        |                 |              |                |              | 90-130       | 90 130S1    |



When the fan relay transformer is energized and the thermostat completes the connection from R to G the fan relay coil energizes. Line voltage power applied to contact common path travels to selected blower speed tap. Additional terminal Y and W are isolated tie point terminals to connect thermostat wiring to compressor and furnace (if required).

**NOTE:** Record the lead wire color with its corresponding terminal for future reference. Unused transformer input leads must be insulated.

\* Black is common with respect to transformer winding, not external circuit.