

# Instruction Sheet

PA-00214S

June 2013

# Remote Bulb Straps

## Remote Bulb Straps

### Installation Instructions

1. Remove hardware from strap or out of bag.
2. There are two types, figure 1, the single row or figure 2 which has three rows with a formed radius where the bulb sits.
3. Clean the surface of the suction line where the remote bulb is to be attached. Secure bulb on the suction line near coil outlet.
4. On lines smaller than 7/8", install bulb on top of pipe. See figure 3.
5. On lines 7/8" and larger, install bulb on lower half of the pipe at either 4 o'clock or 8 o'clock position. See figure 4.
6. Make sure:
  - a. Total length of bulb is making good contact with suction line.
  - b. Equal lengths of the bulb are protruding from each side of the strap.
  - c. Bulb is securely fastened to suction line.
  - d. **Warning:** Do not put flame on or near the bulb.

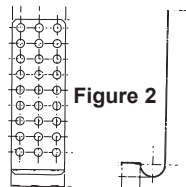


Figure 2

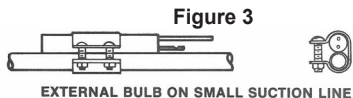


Figure 3

EXTERNAL BULB ON SMALL SUCTION LINE

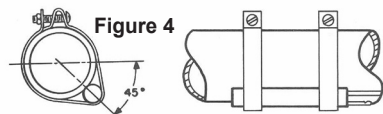


Figure 4

EXTERNAL BULB ON LARGE SUCTION LINE

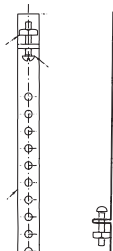


Figure 1

## Abrazadera para Bulbo Remoto de Válvula de Expansión

### Instucciones de Instalación

1. Remueva la tornillería de la abrazadera.
2. Coloque el bulbo remoto en la parte radial de la abrazadera (Figura 1).
3. Limpie la superficie de la línea de succión donde el bulbo remoto se sujetará. Asegure el bulbo en la línea de succión cerca de la salida del evaporador.
4. En líneas de succión con diámetro menor a 7/8", sujete el bulbo remoto en la parte superior de la tubería (Figura 3).
5. En líneas de succión de 7/8" o más de diámetro, sujete el bulbo en la mitad inferior de la tubería en un punto a las 4 o a las 8 (Figura 4).
6. Asegurese:
  - A) Que la longitud total del bulbo haga buen contacto con la línea de succión.
  - B) Que el bulbo quede centrado en la abrazadera.
  - C) Que el bulbo quede firmemente asegurado a la línea de succión.
  - D) **ADVERTENCIA:** No coloque la llama abierta encendida sobre o cerca del bulbo!

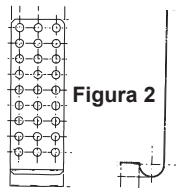


Figura 2

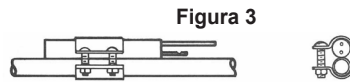


Figura 3

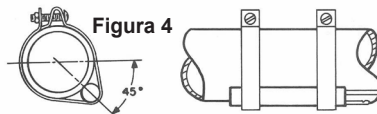


Figura 4

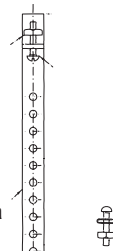


Figura 1

EmersonClimate.com/FlowControls

Technical Support: 1-866-625-8416

PA-00214S (06/13) Emerson is a trademark of Emerson Electric Co. ©2013 Emerson Climate Technologies, Inc. All rights reserved.



**EMERSON**  
Climate Technologies

# Instruction Sheet

PA-00214S

June 2013

# 感温包紧固配件使用说明

## 感温包紧固配件使用说明

### 安装说明

1. 从附件袋中取出五金配件。
2. 有两种类型的绑扎带，如图1的单排孔类型或者如图2的自带成型弧度的用于放置感温包的三排孔类型。
3. 清洁吸气管路上放置感温包位置的表面。  
把感温包固定在吸气管路上靠近盘管出口侧附近。
4. 对于管路外径小于7/8英寸的，把感温包安装在管子顶部。如图3。
5. 对于管路外径大于等于7/8英寸的，把感温包安装在管子下侧约4点钟或8点钟的位置。如图4。
6. 请确保：
  - a. 感温包有合适的总长度，可以很好的接触到吸气管路上。
  - b. 感温包尽量放置在绑扎带的中间位置，两侧露出的长度应该是均等的。
  - c. 感温包应该牢固的安装吸气管路上，不能有松动。
  - d. 警告：感温包附近不允许有火焰。

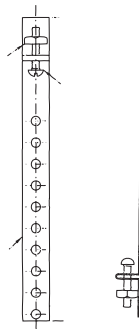


图 1

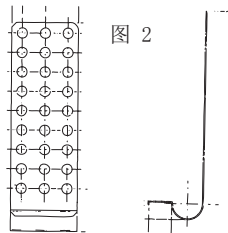


图 2



图 3

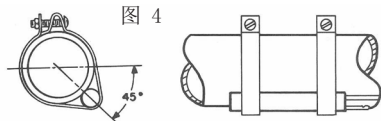


图 4