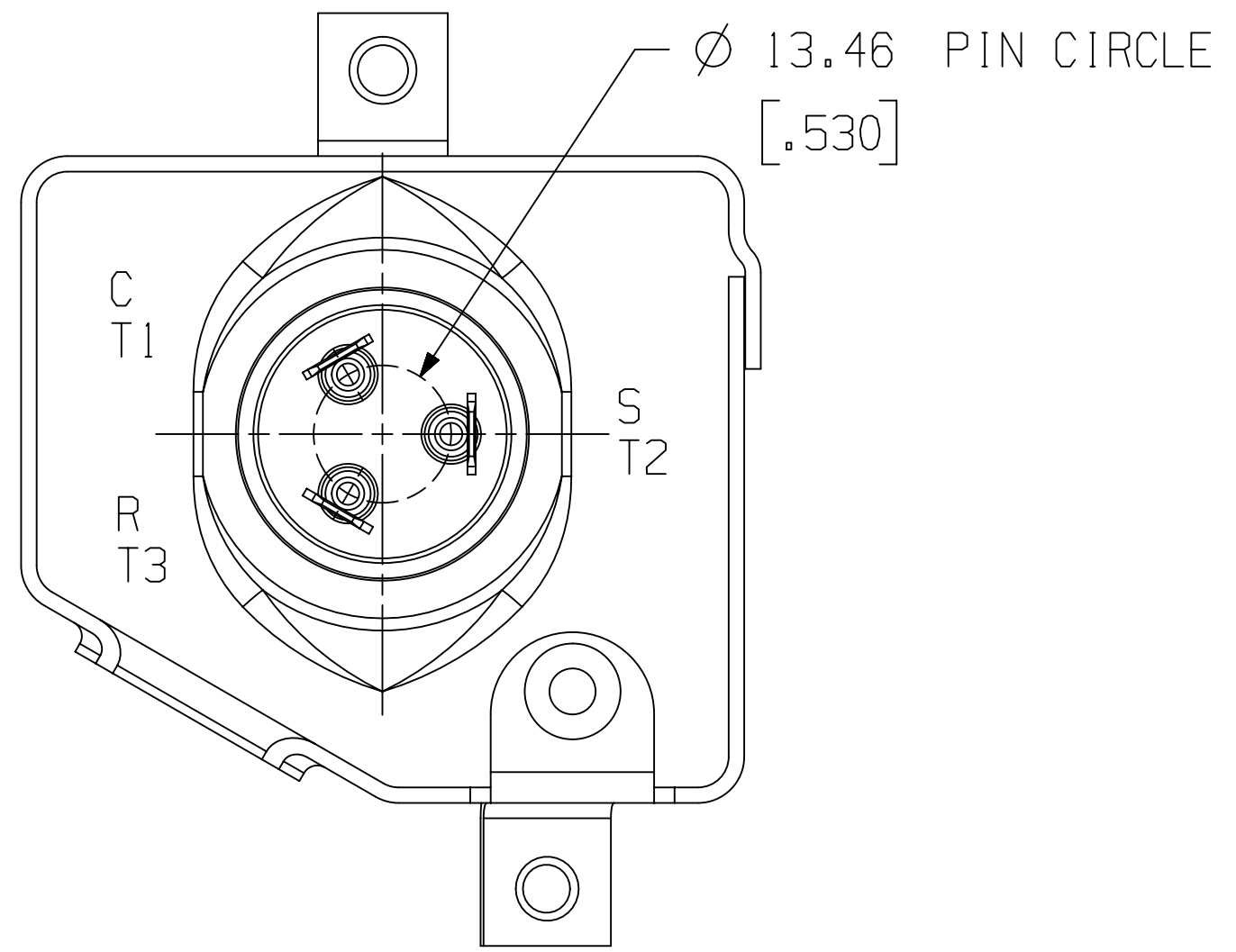


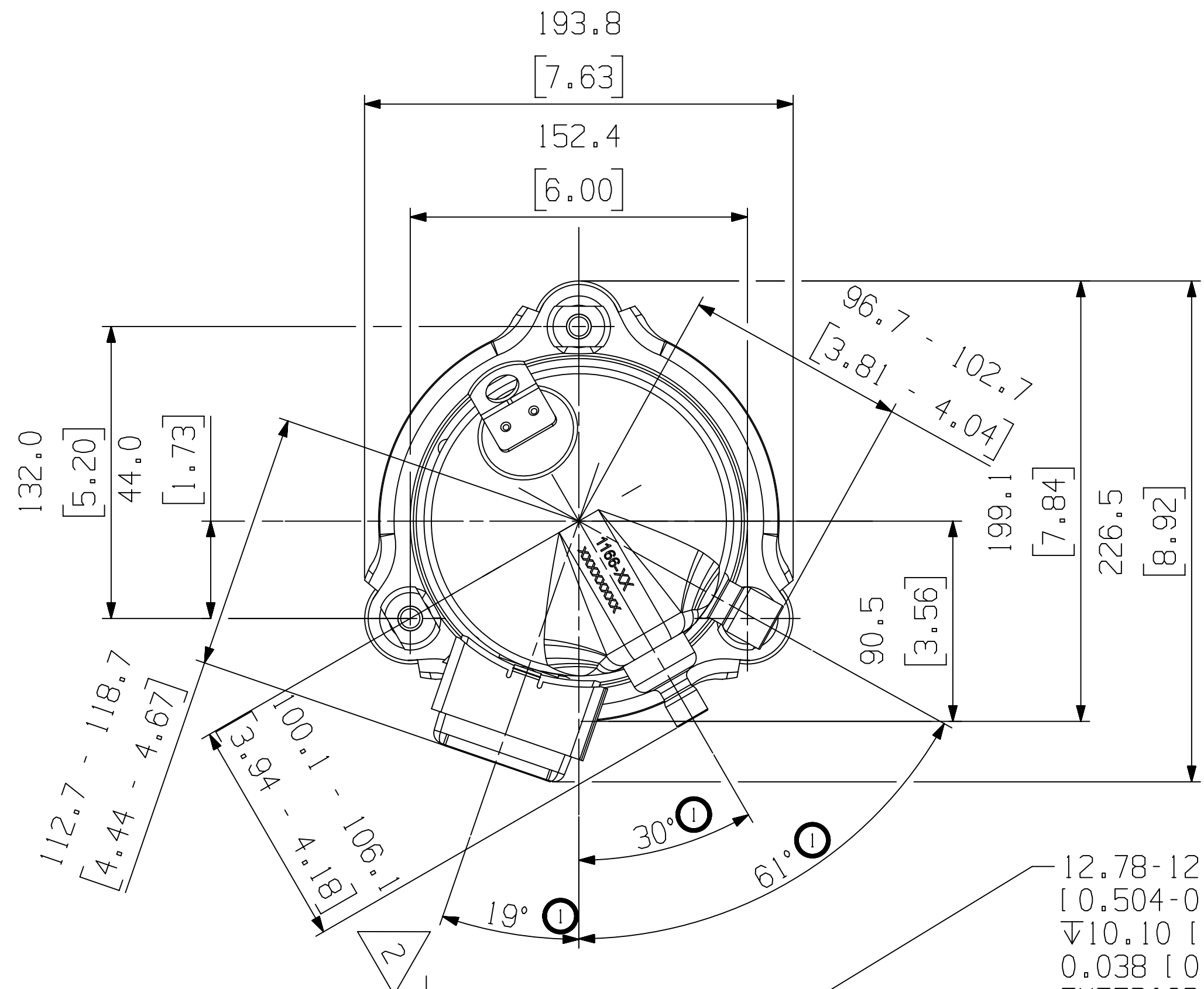
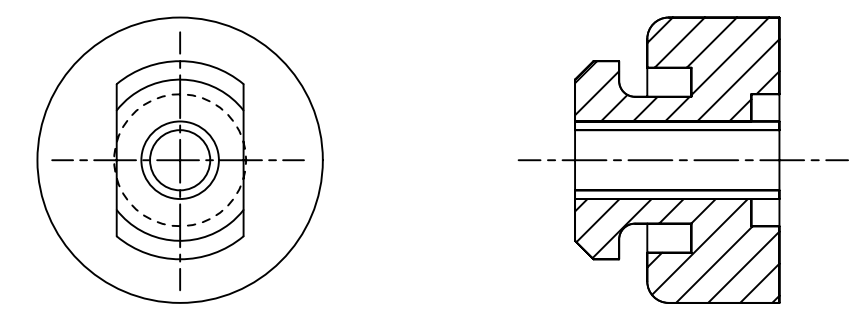
SPECIFICATIONS	
ES NO.	DESCRIPTION
ES92-155	CONVERSION-METRIC

MODEL NUMBER
ZH04/05K1P
YH04/05K1P



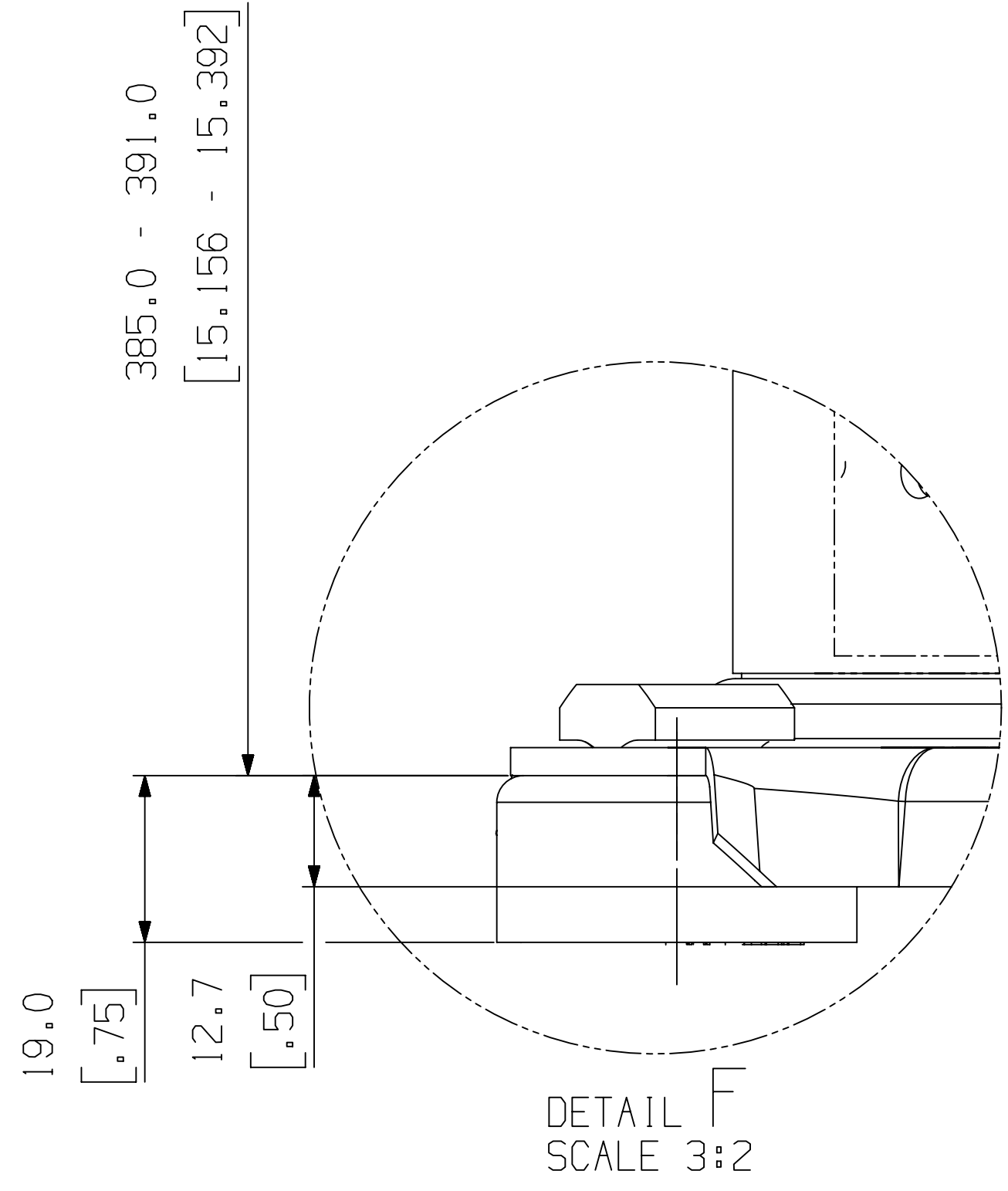
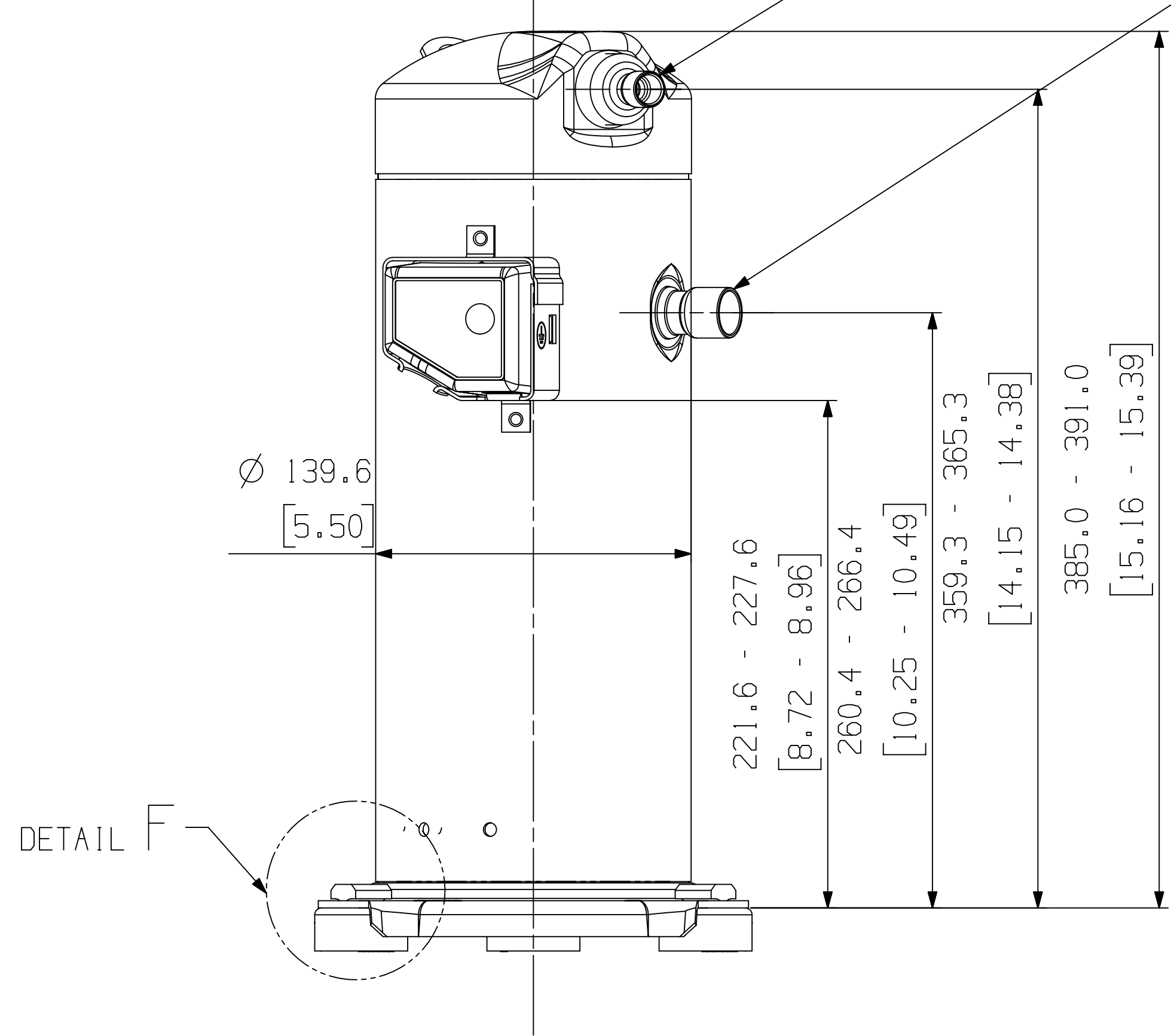
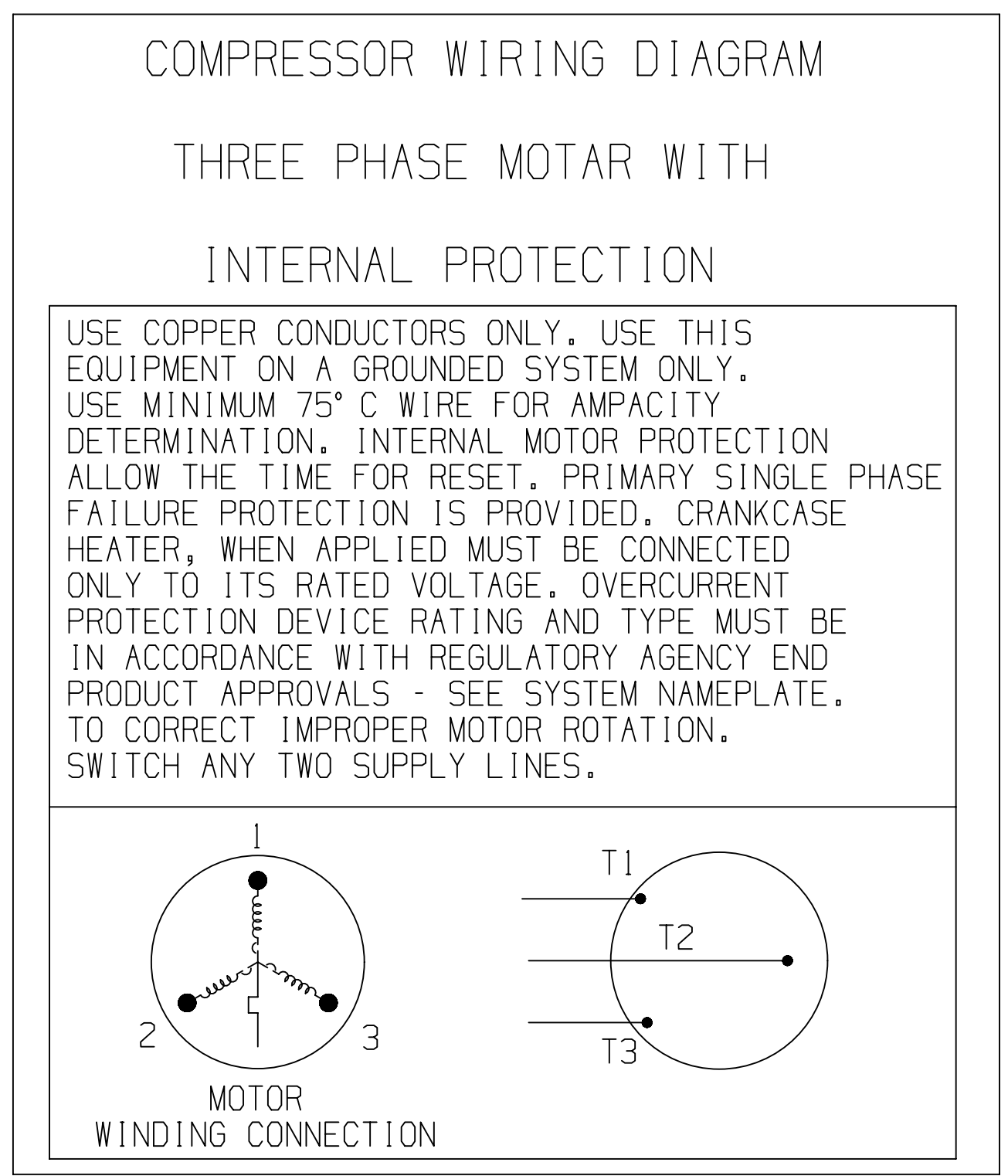
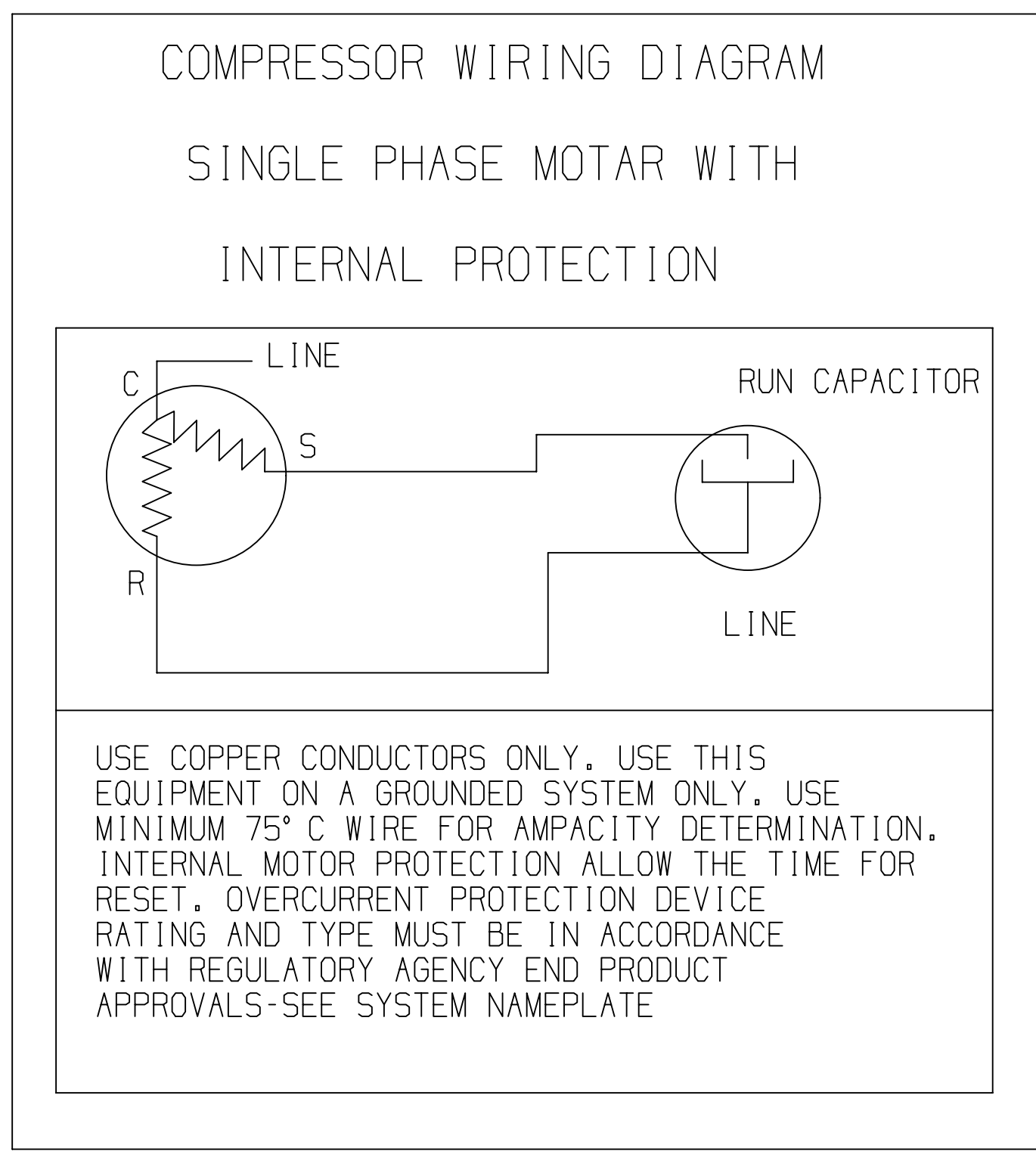
- NOTES:
- ALL TOLERANCES  $\pm 1.50$  [0.060] UNLESS OTHERWISE SPECIFIED.
  - THE SUCTION TUBE, DISCHARGE TUBE, RADIAL DIMENSIONS ARE TO BE GAUGED FROM THE CENTER OF THE MOUNTING HOLE PATTEN.
  - TUBE ENDS MUST BE PLUGGED.
  - MOUNTING KIT:

GROMMET DUROMETER	3 FOOT KIT
35-45	527-0116-05



12.78-12.95 I.D.  $\blacklozenge$   
 [0.504-0.509]  
 $\nabla 10.10$  [0.398] MIN.  
 0.038 [0.0015] MIN THICK  
 EXTERIOR AND INTERIOR  
 COPPER PLATED STEEL DISCHARGE FITTING.

19.12-19.30 I.D.  $\blacklozenge$   
 [0.753-0.759]  
 $\nabla 16.00$  [0.630] MIN.  
 0.038 [0.0015] MIN THICK  
 EXTERIOR AND INTERIOR  
 COPPER PLATED STEEL SUCTION FITTING.



**EMERSON**  
**Copeland**

INTERPRET PER ASME Y14.5M-1994 AND EMERSON DESIGN STANDARDS DS2002

DO NOT SCALE DRAWING

CRITICAL PRODUCT CHARACTERISTICS

UNLESS OTHERWISE SPECIFIED DIMENSIONS ARE MILLIMETER OR ( INCH )

TOLERANCES:  
 1-PLACE  $\pm 0.4$   
 2-PLACE  $\pm 0.15$   
 ANGULAR  $\pm 0.5^\circ$

ENG NOTICE NO.	REV.NO.	REVISIONS	DATE	BY	CHKD
ECN312880	2	ADDED MODEL NUMBER	09-25-20	GW	VC
ECN007952	1	CHANGE ANGLE DIMENSIONS	12-26-13	VL	VC
ECN002293	0	RELEASED	11-19-10	SZ	VC

24 CONFIDENTIALITY NOTICE

THIS DRAWING AND INFORMATION CONTAINED HEREIN ARE THE EXCLUSIVE PROPERTY OF EMERSON CLIMATE TECHNOLOGIES, INC AND/OR ITS AFFILIATES (COLLECTIVELY "EMERSON") AND SHALL BE RETURNED UPON DEMAND AND SHALL NOT BE REPRODUCED IN WHOLE OR IN PART, DISCLOSED TO ANYONE ELSE OR USED, WITHOUT THE WRITTEN CONSENT OF EMERSON.

MATERIAL SPECIFICATION	DRAWN BY	SUPERSEDES DWG NO	REV NO
N/A	VL	-	-
	DATE	SCALE	DATE FORMAT:
	12-26-13	1:2	MM-DD-YY

TITLE	DRAWING NUMBER	SHEET 1 OF 1 DWG
REF DWG-WELD COMP ASSM	497-0984-00	4