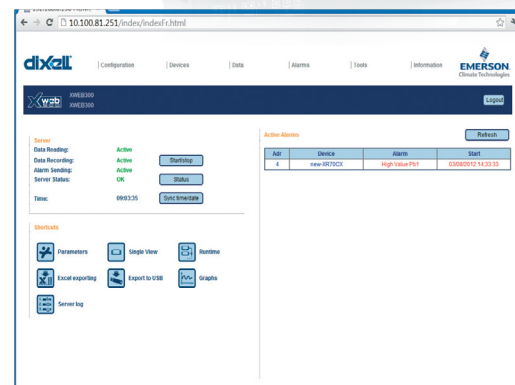


# XWEB300D: Alarm Management and Controlling

It is extremely well suited for 6 or 18 device installations such as petrol stations, mini-market, small storage centres. A simple DIN Rail mounting (4 DIN) and the absence of local user interface make the XWEB300 the ideal solution for the remote assistance (via modem) to the plant. Local or remote connection from PC is made without the need for special software, only standard web browser (Microsoft Internet Explorer® or Firefox®) software is needed; the information is displayed as Web pages. The competitive price lets you to use this Web Server in applications with a only a single regulator such as compressor rack and medical close control.



- Data capture and alarm monitoring WEB server connectable to Dixell's controllers with serial output or to others
- ModBUS-RTU compatible devices
- XWEB is a 10DIN Rail module for easy DIN Rail mounting (DIN) directly inside the machine board or wall mounting with brackets
- Quick and easy connection to Web pages with dedicated interface for PDA/Smartphone
- Possibility to see and modify the parameters of the connected devices remotely
- Complete and simplified analysis of the unit functioning thanks to a powerful tool that allows viewing data in graphical format (Excel®)

- One year of stored data inside the XWEB memory (one year of stored data with 15min sampling time for 6 or 18 controllers)
- XWEB is always accessible even with isolated installations using the built-in GPRS connectivity (optional)
- Access to customized functions
- Data export on USB pendrive
- Alarm sending via FAX, SMS or e-mail
- 15VA max power absorption

## How to order

XWEB300D - X W E B 3 0 0 D - A B 0 0 E

A	B	E
Power supply	N° of instruments	Internal modem
2 = 24Vac	B = 6	0 = No
8 = 110÷230Vac	F = 18	1 = Analogue
		2 = GSM/GPRS

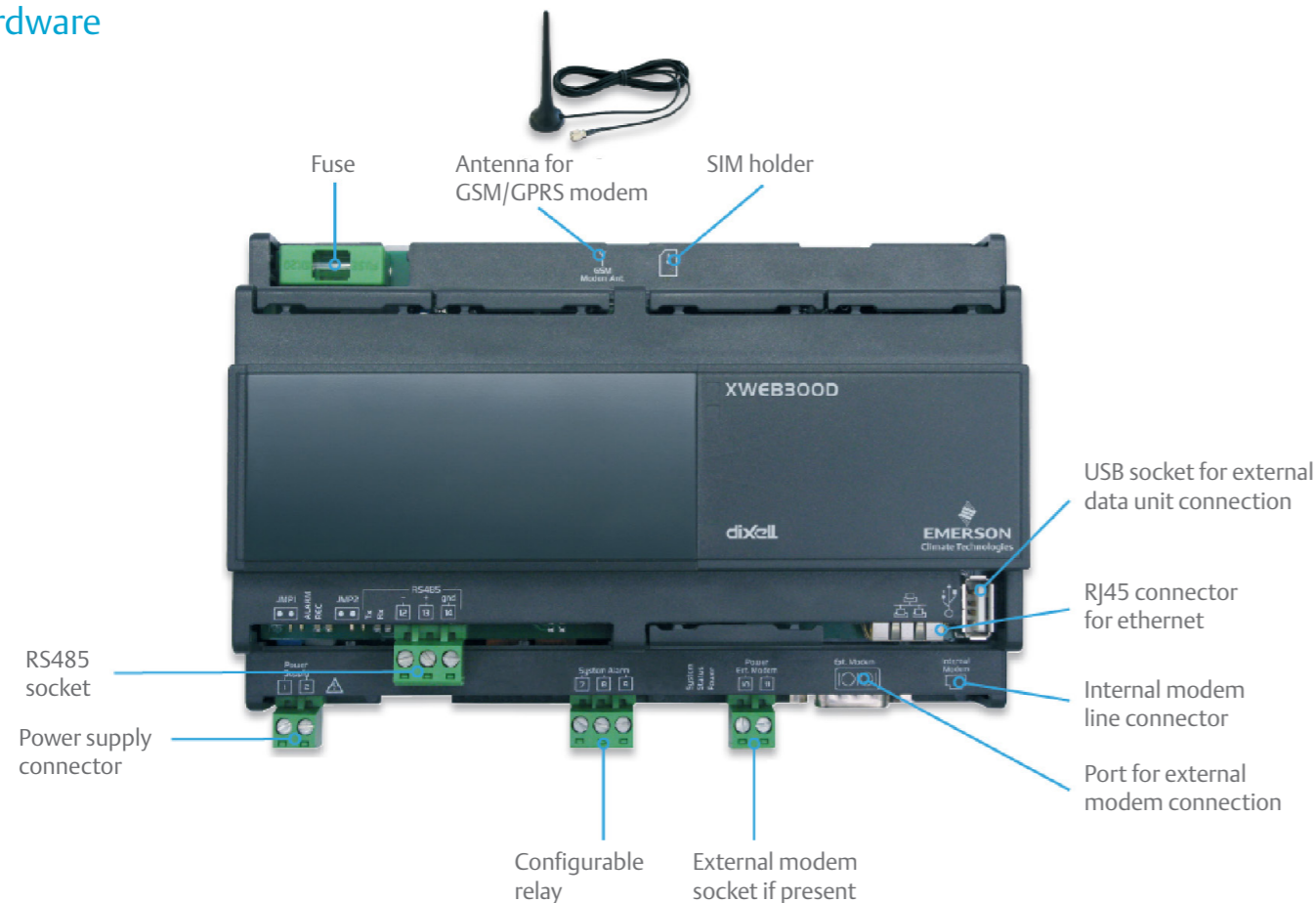
XWEB300D checks the unit and, in case of malfunction alarm, it notifies the assistance center through FAX, SMS or e-mail. It allows OEM's via direct control to decide to engage a local service call out only if necessary. XWEB300D can also record all data relevant to the function of the controlled unit and insert them into a table. In this way the OEM has important information for new models for improvement of the unit itself.

Thanks to LAN port, the connection (also via internet) to the XWEB300D is easy and safe and no special software is required. It is possible to see all the variables of a controller and to manage of all parameters and alarms. With Java Applet it is possible to generate comprehensive visual graphs.



FEATURES	XWEB300D
Power supply	24, 110÷230Vac
LAN output	pres
USB output	pres
RS485 output	pres
Relay output	1 config
Sampling time	from 1 to 60 minutes
External modem	analogue or GSM
Internal modem	analogue or GSM/GPRS opt

## Hardware



## XWEB500-XWEB500D: Monitoring and Controlling

It is extremely well suited for medium installations up to 36 or 100 devices, such as petrol stations, supermarkets or storage centers. Its innovative and useful features make the instrument suitable for medium-large applications such as production and storage goods centers. Thanks to its two available formats, it can be installed whether on DIN Rail or wall or panel mounting, but can also be used as desk instrument. Local or remote connection from a PC is made without the need of special software, only a standard web browser (Microsoft Internet Explorer® or Firefox®) software is needed; the information is displayed as Web pages.

- Data capture and alarm monitoring WEB server connectable to Dixell's controllers with serial output or to others ModBUS-RTU compatible devices
- Ability to operate in stand alone mode thanks to the local display and keyboard (XWEB500)
- Easy DIN Rail mounting (DIN) directly inside the machine board or wall mounting with brackets (XWEB500D)
- Quick and easy connection to Web pages with dedicated interface for PDA/Smartphone
- Possibility to see and modify the parameters of the connected devices remotely
- Complete and simplified analysis of the unit functioning thanks to a powerful tool that allows to view data in graphical format (Excel®)
- One year of stored data inside the XWEB memory (one year of stored data with 15min sampling time for 36 or 100 controllers)
- XWEB500D is always accessible even with isolated installations using the built-in GPRS connectivity (optional)
- Layout for netsurfing of web site in graphic format
- Data export on USB pendrive
- Performance Meter for cooling demand control
- Alarm sending via FAX, SMS or e-mail
- 15VA max power absorption for XWEB500D and 20VA max for XWEB500

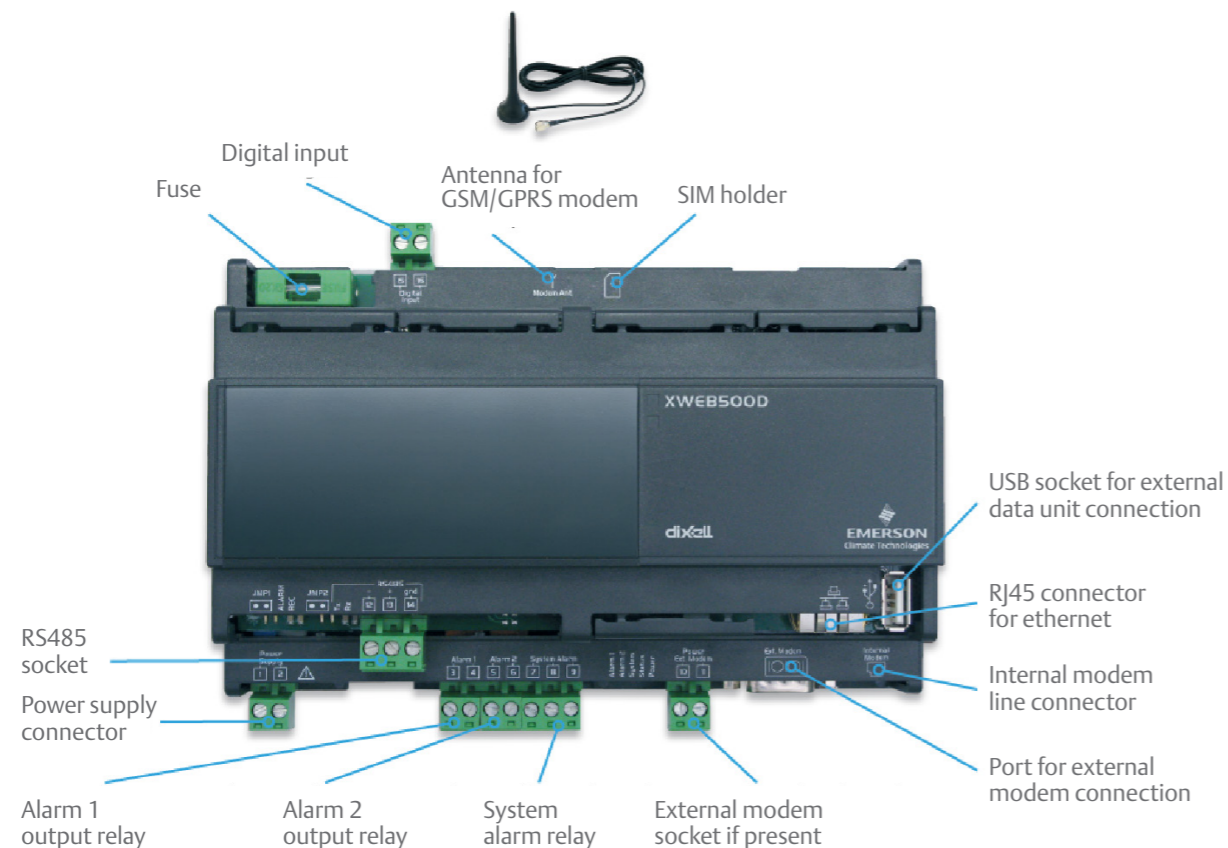
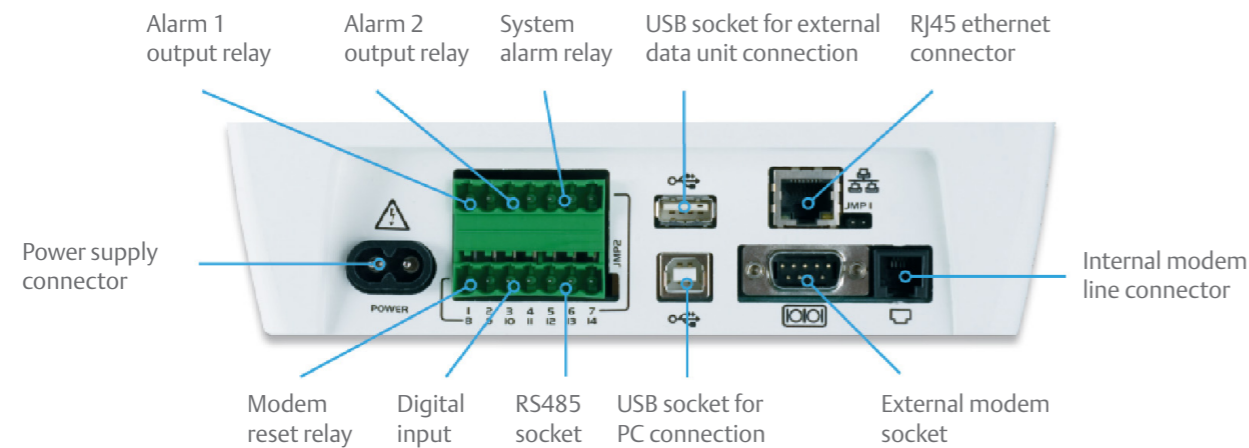
## How to order

XWEB500	X	W	E	B	5	0	0	-	A	B	0	0	E	
XWEB500D	X	W	E	B	5	0	0	D	-	A	B	0	0	E

A	B	E
Power supply	N° of instruments/CRO	Internal modem
2 = 24Vac (for XWEB500D)	H = 36/no	0 = No
4 = 110Vac (for XWEB500)	N = 50/CRO (1 engine)	1 = Analogue
5 = 230Vac (for XWEB500)	T = 100/no	2 = GSM/GPRS (for XWEB500D)
8 = 110÷230Vac (for XWEB500D)		

FEATURES	XWEB500	XWEB500D
Power supply	110, 230Vac	24, 110÷230Vac
LAN output	pres	pres
USB output	2	1
RS485 output	pres	pres
Relay output	3	3
Digital input	pres	pres
Sampling time	from 1 to 60 minutes	from 1 to 60 minutes
External modem	analogue or GSM	analogue or GSM
Internal modem	analogue opt	analogue or GSM/GPRS opt

## Hardware



## XWEB5000: Monitoring, Controlling and Supervising

It is provided with a powerful supervision engine suited for larger installations (with up to 247 devices) in the refrigeration, conditioning and building automation field, where it is necessary to program several different interactive actions that the controller has to perform. It is extremely well suited to supermarkets, large storage and distribution centres, as well as production and storage goods processing and is ideal for the large service center (modem, ethernet and internet connection). The system manages the alarm transmission to the "in charge" service (via FAX, e-mail, SMS and also through relay outputs) and it can also work without a PC using direct connection of a monitor, keyboard and mouse. Local or remote connection PC is made using Microsoft Internet Explorer® and Firefox® browser.

- Monitoring, controlling and supervising web server connection to Dixell's controllers with serial output and to other ModBUS-RTU compatible devices
- 19" RACK or desk mounting
- Built-in editor with local and field simulator
- Quick and easy connection to Web pages with dedicated interface for PDA/Smartphone
- All controller values can be displayed using a special "Single View" window or a "Run Time" window with many controllers viewed at the same time. The ability to use a "Layout" view of the plant with pictures and schematic drawings is also an option
- Complete and simplified analysis of the unit functioning thanks to a powerful tool that allows to view data in graphical format (Excel®)
- One year of stored data inside the XWEB memory (one year of stored data with 15min sampling time)
- Easy plant management by means of the "Scheduler" to send commands according to a custom calendar
- Calendar function and internal RTC both for alarm transmission to the "in charge" service and command sending to the controllers
- Possibility to divide the controllers set in different categories of products with their own sampling time
- Ability to select particular data on which to perform the monitoring with reduced sampling time
- Alarm sending via FAX, SMS or e-mail
- Commands sending activation through digital input
- Standard communication protocol ModBUS-RTU
- 50VA max power absorption
- DPC (Dew Point Control) for anti-sweat heater management

## How to order

XWEB5000	X	W	E	B	5	0	0	-	6	0	0	0	E
----------	---	---	---	---	---	---	---	---	---	---	---	---	---

E
Internal modem
0 = No
1 = Yes



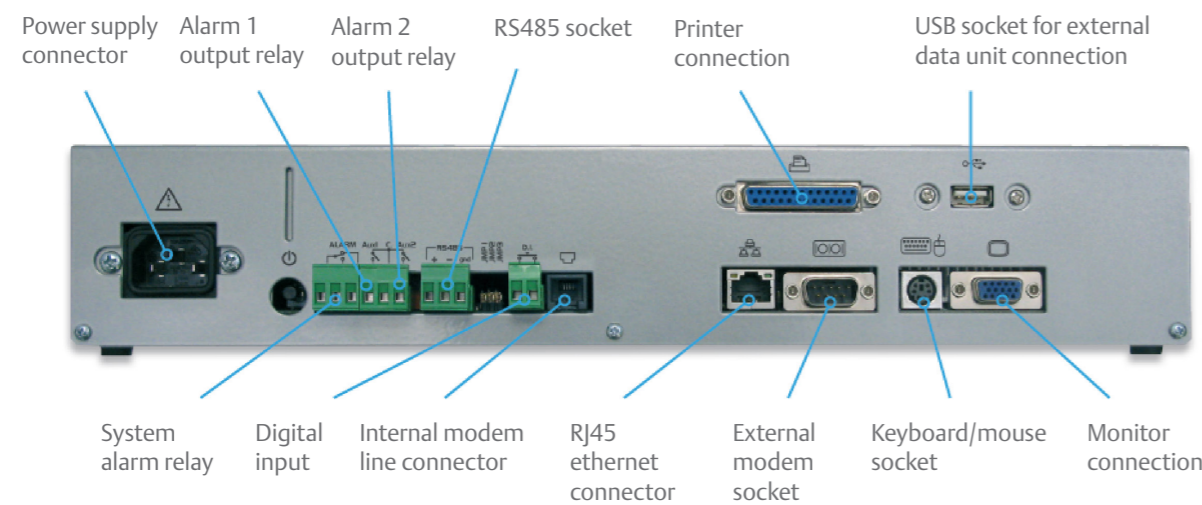
Easy configuration, efficient management of all controller values and a display of controllers also using pictures and schematic drawings: these are some of the XWEB3000's strengths. It is an intuitive, powerful and at the same time, very versatile device. This web server allows parameter and alarm management with different levels and typologies, providing the user with the possibility to divide the controllers into different categories, each with their own sampling periods. Powerful tools include: the scheduler which is a graphic instrument created to manage commands sent to the controllers, data export used to save data in a Microsoft Excel file, and the back-up function to have data-safe protection even in the worst environmental usage, also to save all the unit setup.



The alarm signalling for service is very flexible and can be done through FAX, e-mail, SMS and also via relay outputs.

FEATURES	XWEB3000
Power supply	110÷230Vac
LAN output	pres
USB output	2
RS485 output	pres
Relay output	3
Digital input	presv
Printer output	25 pin
Keyboard/mouse output	pres
Video output	pres
Sampling time	from 1 to 255 minutes
External modem	analogue
Internal modem	analogue opt

## Hardware



370x238mm

## XWEB3000: Industrial Monitoring and Controlling

It is extremely well suited for larger installations with up to 247 devices such as supermarkets, hypermarkets or large storage and distribution centers as well as production and storage goods processing such as fast-food, restaurants, catering up to medical and pharmaceutical applications. XWEB3000 is the ideal solution for service needs (modem, ethernet and internet connection); it can operate, as a stand-alone server without using a PC but it's also simple to connect a monitor, keyboard and mouse. Local or remote connection from a PC is made without the need of special software; only a standard web browser (Microsoft Internet Explorer® and Firefox®) software is needed.

- Data capture and alarm monitoring WEB server connectable to Dixell's controllers with serial output or to others ModBUS-RTU compatible devices
- 19" RACK or desk mounting
- Quick and easy connection to Web pages with dedicated interface for PDA/Smartphone
- All controller values can be shown using a special "Single View" window or using "Run Time" window where many controllers can be viewed at the same time. It is even possible to use a "Layout" view of the plant with pictures and schematics drawings
- Complete and simplified analysis of the unit functioning thanks to a powerful tool that allows to view data in graphical format (Excel®)
- One year of stored data inside the XWEB memory (one year of stored data with 15min sampling time)
- Easy plant management by means of the "Scheduler" to send commands according to a custom calendar
- Calendar function and internal RTC both for alarm transmission to the "in charge" service and command sending to the controllers
- Possibility to divide the controllers set in different categories of products with their own sampling time
- Ability to select particular data on which to perform the monitoring with reduced sampling time
- Alarm sending via FAX, SMS or e-mail
- Commands sending activation through digital input
- Standard communication protocol ModBUS-RTU
- 50VA max power absorption

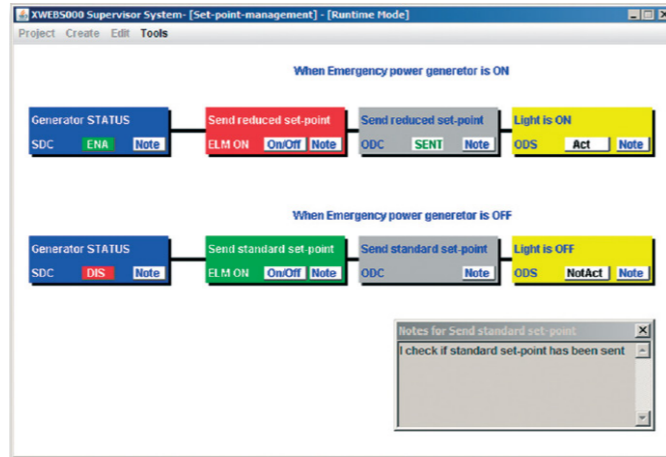
## How to order

XWEB3000	X	W	E	B	3	0	0	-	6	0	0	0	E
	E												
	Internal modem												
	0 = No												
	1 = Yes												



## Supervising

With XWEB5000 it is possible to intercept sending commands to monitored devices. The installer can create a supervision "Project" (or several "Projects") by programming links between the input variables (inputs, status and outputs of a controller) and defining what actions the system must take when these conditions are met. Unlike a standard PLC, where the user is required to know a specific programming language, with the XWEB5000 the "project" can be easily created using a simple graphic user interface, but more importantly, without the need to learn a complex programming language. Specific software is not necessary: the supervising software has been written in JAVA and it runs on the client PC. The project is saved to the XWEB5000; several projects can be run simultaneously.

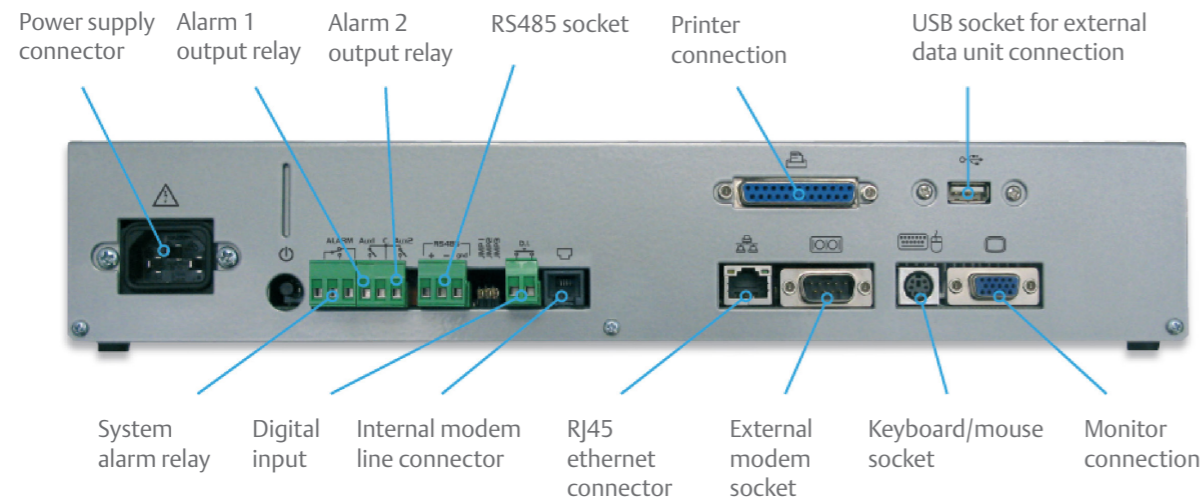


## Automation

The high versatility and programmability allow the XWEB5000 to perform automation programs. In fact it's possible, for example, to manage the use of plant lights, internal or external signs, the battery charge/discharge as fork lifts, increasing the energy saving process. In case of compressor fault or when the absorption threshold exceeds the set, etc., the monitoring unit can automatically interact with the rest of system.

FEATURES	XWEB5000
Power supply	110÷230Vac
LAN output	pres
USB output	2
RS485 output	pres
Relay output	3
Digital input	presv
Printer output	25 pin
Keyboard/mouse output	pres
Video output	pres
Sampling time	from 1 to 255 minutes
External modem	analogue
Internal modem	analogue opt

## Hardware



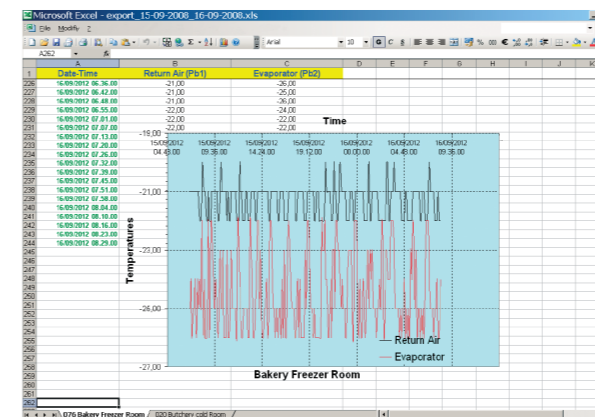
## XWEB Functions

## Parameter Programming and Run Time

Thanks to the XWEB the user has an intuitive, powerful and versatile device all in one that allows modification of various functioning parameters of the instruments. It will no longer be necessary to make manual adjustments on the controller, because by using the different windows available, and with a few simple operations, it is possible to obtain the required updating. The Run Time function displays many devices together in a unique window. This is dynamic page and the data showed is updated in real time. The status of the devices connected (also from different manufacturers) is displayed simply and clearly and it is possible to modify the various functioning parameters of the instruments.

## RS485 Line-Check

A powerful new tool is able to check performance and statistical data for each controller by carrying out a functional test for every device connected to the RS485 network. You can then have information regarding the quality of the connection. The tool is very useful especially when there is the necessity analyze a network problem; with statistics that allow you to easily identify which instrument has a connection problem.

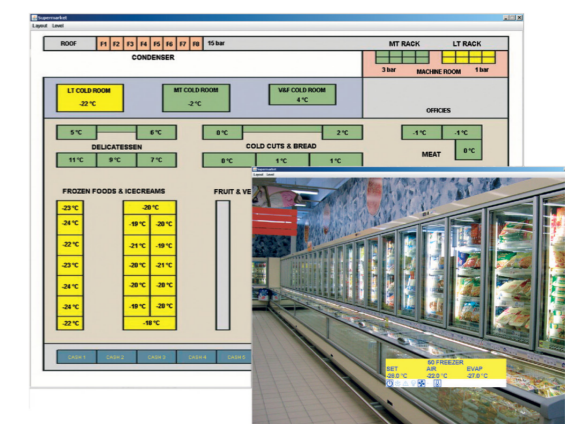


## Data Export

It is possible to export all data information in a Microsoft Excel® file. The user can later use this information to build graphs or to collect data. It is possible to select a data interval and filter between different controllers.

## Layout & Global Commands (for XWEB500D, XWEB500, XWEB3000, XWEB5000)

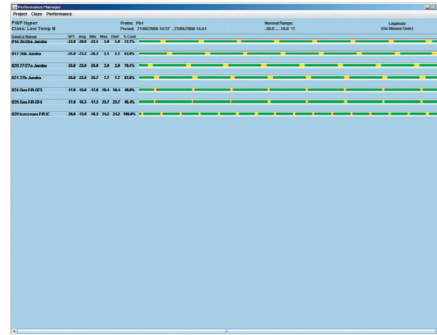
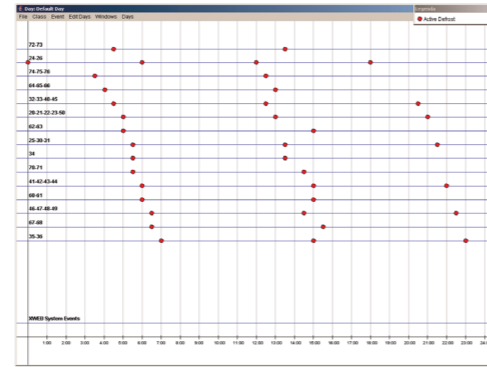
A powerful graphic editor that doesn't require the installation of any additional software on your PC is what makes XWEB layout the ideal solution. Using this function, the user can access all the recorded data of the controllers and even send a command to a controller. Global Commands option let you send multiple commands to one or more controllers at the same time. In addition, using the digital input it is possible to automatically start the sending of commands



## Scheduler

(for XWEB500D, XWEB500, XWEB3000, XWEB5000)

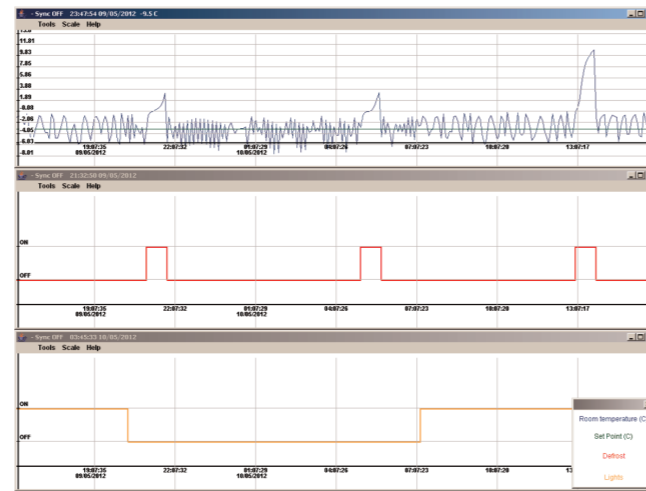
The scheduler is a powerful graphic tool to manage commands sent to the controllers. You can quickly see an overview of all daily activity. This means that energy saving routines and defrosts can be easily scheduled.



## Performance Meter

(for XWEB500D, XWEB500, XWEB3000, XWEB5000)

This highly appreciated function allows users to verify the right temperature for single devices (wall cabinets, benches, rooms, and more). The graphical layout offers a complete view of the plant operating mode



## Graphics

(for XWEB300D, XWEB500D, XWEB500, XWEB3000, XWEB5000)

## Circular Graphics

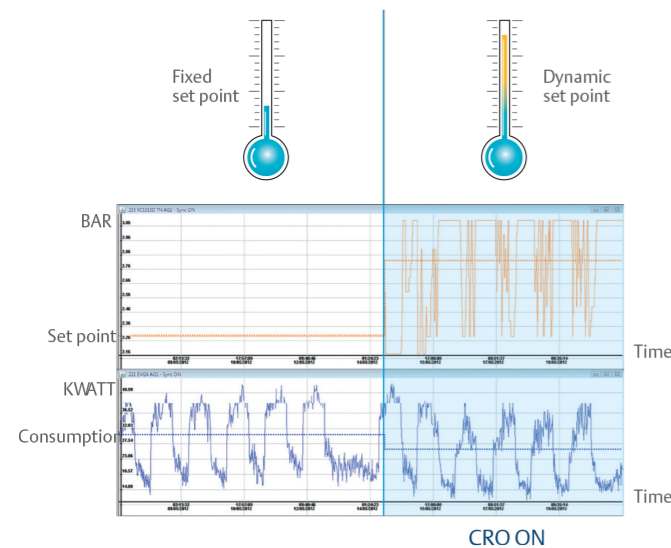
(for XWEB3000, XWEB5000)

The XWEB can supply powerful graphs that are able to represent multiple analogue variables on the same pictorial system and the course of the status of the outputs and alarms. This allows the user to have a precise snapshot view of important variables for easy diagnosis of faults. Thanks to the high sampling rate of circular graphs, they are more detailed and appreciated by service personnel for diagnostics.

## Cro

(for XWEB500D, XWEB500, XWEB5000)

Thanks to the special CRO algorithm (Compressor Rack Optimization), the connection to the modern supervising systems (of Dixell) allows the management of the compressor rack set point in the best possible way, depending on the devices connected, which can result in plant optimization and energy savings. The system, equipped with the CRO function, analyzes the information from the controller to determine if a controller needs more refrigeration power and how much. The set point will be recalculated in order to satisfy the worse instance and sent from the supervising system to the XC1000D compressor rack controller; this will be the new working set point. If the supervising system can't manage the XC1000D, it's the controller that "decides" to replace the set point (coming from the system) and will then re-define the set point in the planning phase of a refrigeration plant. The two graphs emphasize that when the CRO algorithm is active, in a real installation, the set point becomes on average higher, and consequently the energy consumption decreases. The dotted line represents the average weekly value.



## XWEB Connections

The high connectivity is one of the main XWEB family's strengths; see below for an overview of several methods to connect with the systems.

### Connection Via Smartphone/PDA

When the connection is made by means of a Palmtop computer (PDA), the XWEB automatically recognizes it and makes several dedicated pages available. It is possible to display all the values of a device and send it commands on the PDA.



### Local Connections

XWEB server and associated systems can be locally linked connecting the system to a PC.



The complete and powerful hardware platform typical of XWEB3000 and XWEB5000 systems allows them to be used as the local machine by way of monitor, keyboard and mouse connection.

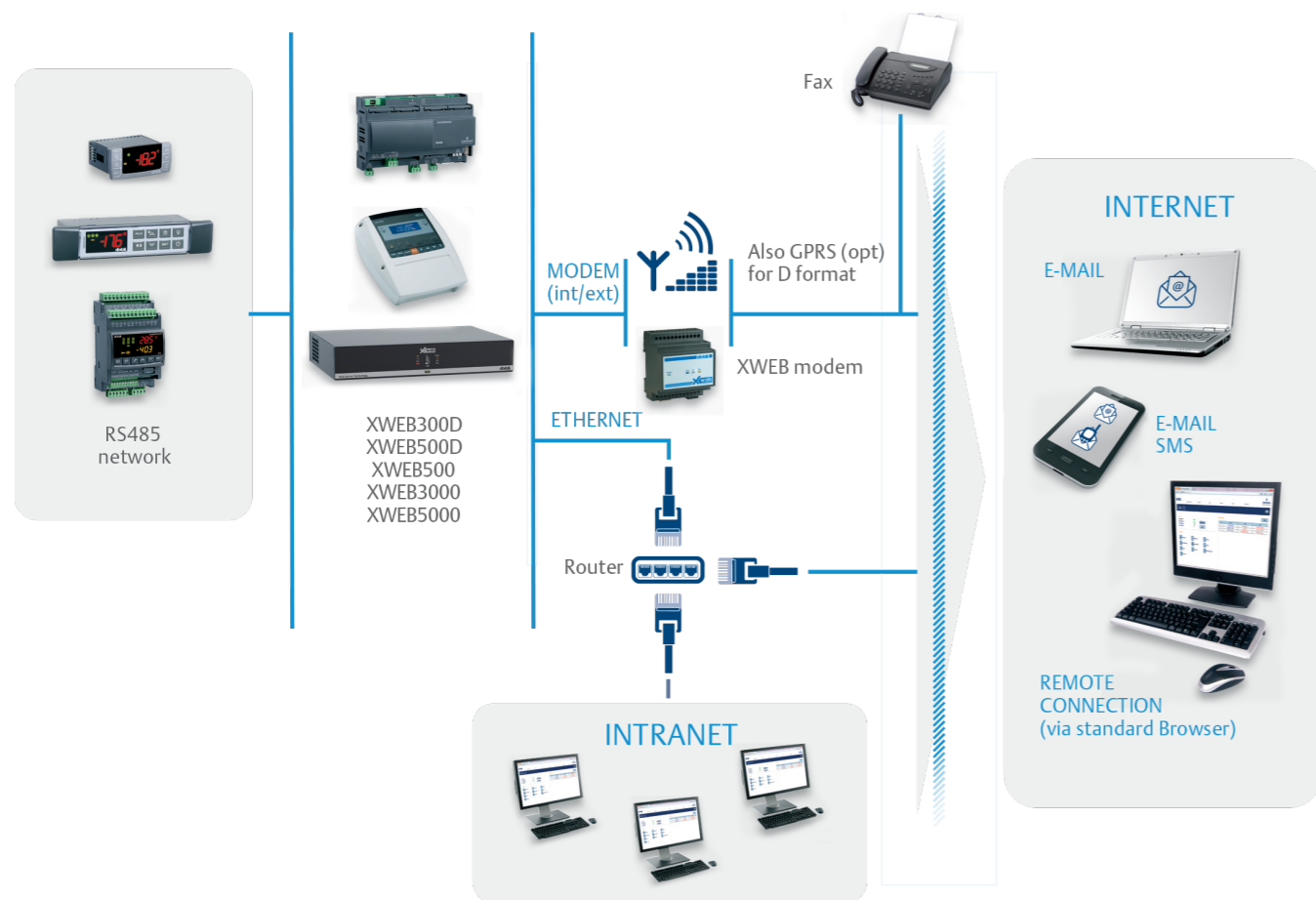




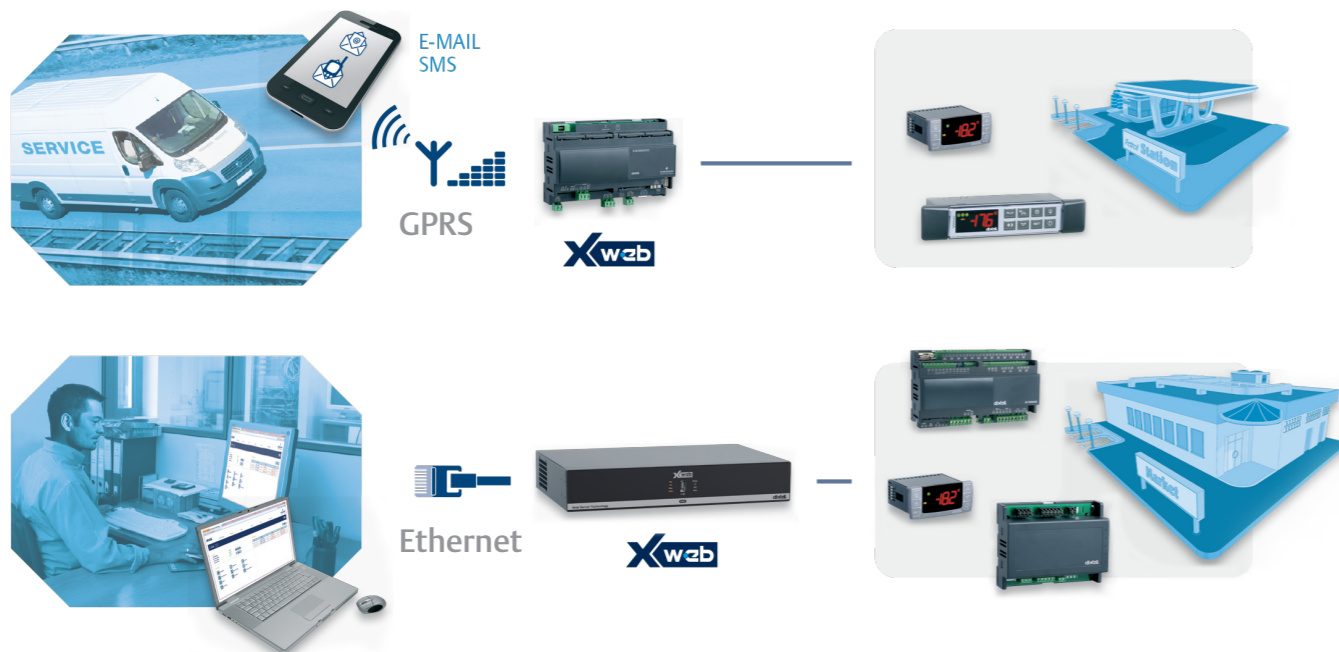
## Remote Connections

XWEB Servers can be remotely accessed using several methods:

- by modem with point to point connection, also with GSM modem (only for devices that support it);
- by link in local Ethernet network, by means of standard net connector RJ45;
- by direct Internet connection, if provided with a public and static IP address.



The GPRS connectivities are a popular favorite, which distinguishes it as a best-solution in case of alarm management with medium-small applications, and the ETHERNET in case of tele-assistance and contron with medium-large applications.



## XWEB System Guide

	XWEB300D	XWEB500D	XWEB500	XWEB3000	XWEB5000
Applications	small and medium	medium and large	medium and large	large	large with supervision
Format	10 DIN Rail	10 DIN Rail	210x230x87h	350x235x47h	350x235x47h
Power supply	24Vac or 110÷230Vac	24Vac or 110÷230Vac	110Vac or 230Vac	110÷230Vac	110÷230Vac
Display			•		
N° of instruments	6 - 18	36 - 100	100	247	247
USB port for PC connection			•		
USB output for device connection	•	•	•	•	•
Relay output	1	3	3	3	3
Digital input		•	•	•	•
LAN output	•	•	•	•	•
RS485 output	•	•	•	•	•
External modem	analogue or GSM	analogue or GSM	analogue or GSM	analogue	analogue
Internal modem	analogue or GSM/GPRS opt	analogue or GSM/GPRS opt	analogue opt	analogue opt	analogue opt
Sampling time	from 1 to 60 minutes	from 1 to 60 minutes	from 1 to 60 minutes	from 1 to 255 minutes	from 1 to 255 minutes
RS485 line check	•	•	•	•	•
Parameter programming	•	•	•	•	•
Run time function	•	•	•	•	•
Data export in Excel® format	•	•	•	•	•
Graphics	•	•	•	•	•
Layout function		•	•	•	•
Scheduler function		•	•	•	•
Global commands		•	•	•	•
Performance meter		•	•	•	•
Circular graphics				•	•
Supervision module					•
CRO module		•	•		•



# Contact Us

## Asia Pacific Headquarters

Suite 2503-10A, 25/F, Exchange Tower,  
33 Wang Chiu Road, Kowloon Bay,  
Kowloon, Hong Kong  
Tel: (852) 2866 3108  
Fax: (852) 2520 6227

## Australia

356 Chisholm Road  
Auburn NSW 2144, Australia  
Tel: (612) 9795 2800  
Fax: (612) 9738 1699

## China - Beijing

Room 1203-1205,  
North Wing Junefield Plaza Central Tower,  
No. 10 Xuan Wu Men Wai Street,  
XiCheng District, Beijing, PRC  
Tel: (8610) 5095 2188

## China - Guangzhou

Guangzhou Office  
Unit 2202B, 22/F, Leatop Plaza,  
32 Zhujiang East Road, Tianhe Dist.,  
Guangzhou 510623, PRC  
Tel: (8620) 8595 5188

## China - Shanghai

Shanghai Sales Office  
7/F, Emerson Building, 1582 Gumei  
Rd, Shanghai, PRC  
Tel: (8621) 3338 7333

## India - Mumbai

601-602, 6/F Delphi B-Wing,  
Central Avenue,  
Hiranandani Business Park,  
Powai, Mumbai 400076, India  
Tel: (9122) 6786 0793  
Fax: (9122) 6662 050

## India - Pune

Plot No. 23, Rajiv Gandhi Infotech Park,  
Phase - II, Hinjewadi,  
Pune 411 057, Maharashtra, India  
Tel: (9120) 4200 2000  
Fax: (9120) 4200 2099

## Indonesia

23/F North Tower,  
Sampoerna Strategic Square–  
Jl. Jend. Sudirman Kav. 45-46,  
12930, Jakarta Indonesia  
Tel: (6221) 2509 1400,  
(6221) 5793 1000  
Fax: (6221) 5793 0883

## Japan

No. 3-9-5 Shin-Yokohama,  
Shin-yokohama Tosho Building,  
Kohoku-ku, Yokohama,  
222-0033 Japan  
Tel: (8145) 475 6371  
Fax: (8145) 475 3565

## Malaysia

No. 1, Block A  
Jalan SS13/5 Subang Jaya  
Selangor 47500, Malaysia  
Tel: (603) 5624 2888

## Middle East & Africa

PO Box 26382  
Jebel Ali Free Zone - South  
Dubai, UAE  
Tel: (9714) 811 8100  
Fax: (9714) 886 5465

## Philippines

10/F SM Cyber West Avenue,  
EDSA cor. West Avenue,  
Barangay Bungad, Diliman,  
Quezon City 1105, Philippines  
Tel: (632) 689 7200 ext. 4395

## Saudi Arabia

PO Box 34332 - 3620  
3620 Building 7874, Unit 1,  
67th street 2nd Industrial City  
Dammam, Saudi Arabia  
Toll Free: 800 844 3426  
Tel: (966) 3814 7560  
Fax: (966) 3814 7570

## South Korea

5/F, NIA Building,  
Cheonggyecheon-ro,  
Jung-gu 04520, Seoul Korea  
Tel: (822) 3483 1500  
Fax: (822) 592 7883

## Taiwan

3/F, No. 122 Lane 235,  
Pao Chiau Rd., XinDianv Dist.,  
New Taipei City 23145, Taiwan (R.O.C.)  
Tel: (8862) 8912 1360  
Fax: (8862) 8912 1890

## Thailand

34/F, Interlink Tower,  
1558/133, Bangna Tai,  
Bangkok 10260, Thailand  
Tel: (662) 716 4700  
Fax: (662) 751 4241

## United Arab Emirates

Jebel Ali Free Zone  
P.O. Box 26382, Dubai  
United Arab Emirates  
Toll Free: 80004413428  
Tel: +97148118100  
Fax: +97148865465

## Vietnam

9.04/F, Block A2, Viettel Tower  
285 Cach Mang Thang Tam, District 10  
Ho Chi Minh City, Vietnam  
Tel: (84) 28 6290 8243

Scan to visit:



Emerson Asia

[Climate.Emerson.Com/Asia/Refrigeration](https://Climate.Emerson.Com/Asia/Refrigeration)

Asia 01 00 Issued 05/2022 Emerson is a trademark of Emerson Electric Co. or one of its affiliated companies.  
©2022 Emerson Electric Co. All rights reserved.



@EmersonComResAP

EMERSON. CONSIDER IT SOLVED.™