

Vission 20/20 micro-controller



- Reliable operation
- Enhanced communications
- Easy to use
- Flexible and expandable

Reliable operation

- Linux operating system for streamlined, robust operation
- Low thermal foot print enables high ambient operating temperature
- Advanced ETX CPU technology has fewer connections which improves speed and reliability
- Advanced noise isolation technology reduces EMI interference
- Built-in diagnostic functions simplify troubleshooting

Enhanced communication

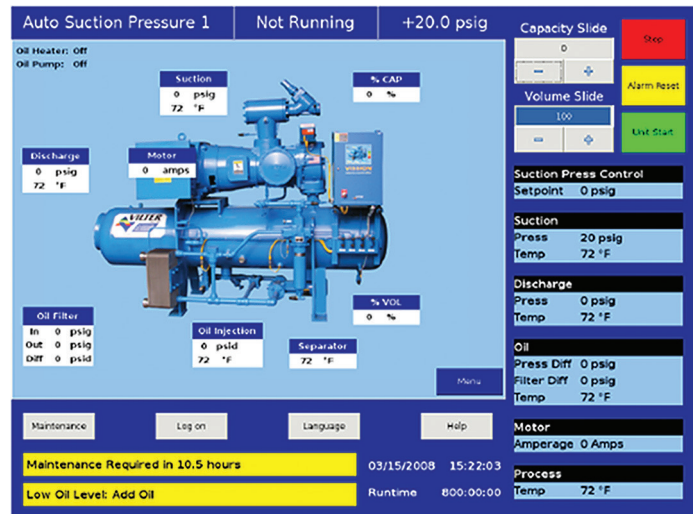
- Web accessibility provides full control and monitoring from a remote PC as though you were standing in front of the compressor
- High-Speed Ethernet IP and Modbus TCP protocols
- Modbus RTU Serial Communications

Easy to use

- High visibility large 15" XGA color touch screen display
- Real-time and historical trending
- Four levels of security
- Multi-language capability
- USB flash memory for updating software and downloading reports and setpoints

Flexible and expandable

- Configurable software for maximum application flexibility
- Expandable I/O adapts to future expansion requirement
- Multiple compressor sequencing



EmersonClimate.com